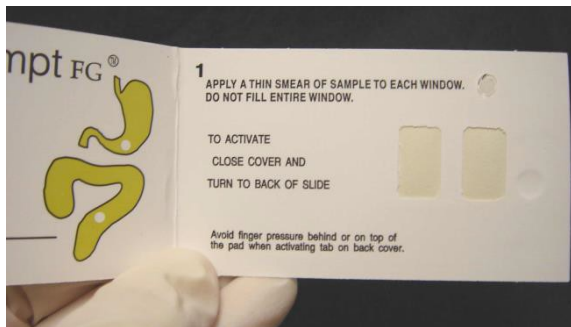


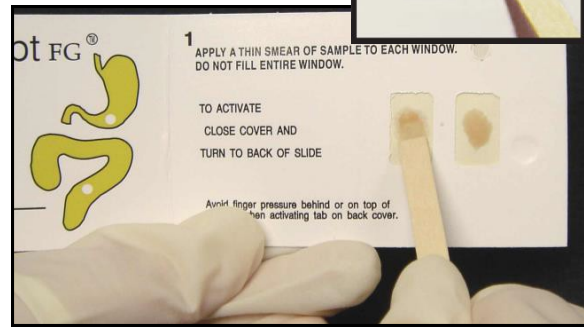
HemaPromptTM FG

Fecal & Gastric Occult Blood Test

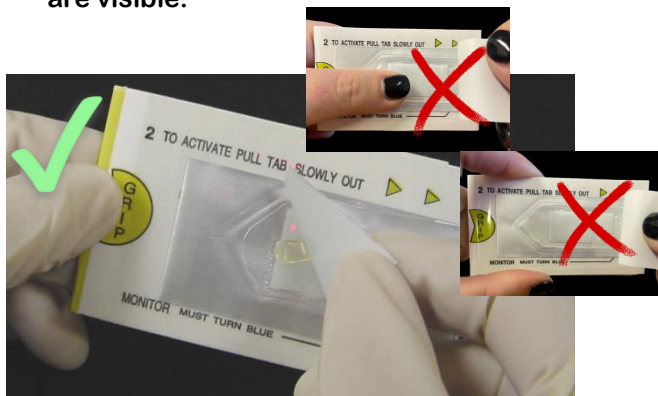
Easy Instructions



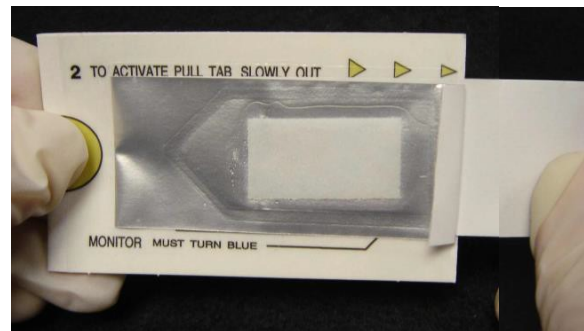
1. Open the card so specimen windows are visible.



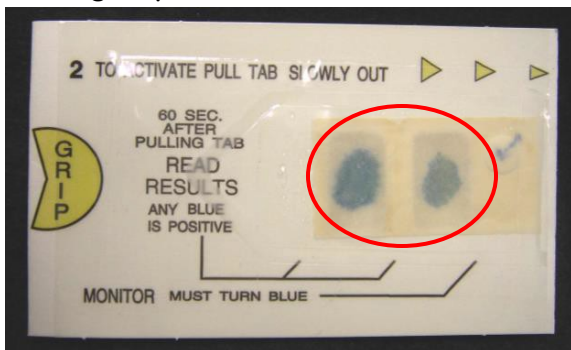
2. Apply a thin smear of specimen to each window. **Do not cover entire window** (See insert) - Leave an outer periphery of white for contrast. Close card & turn over.



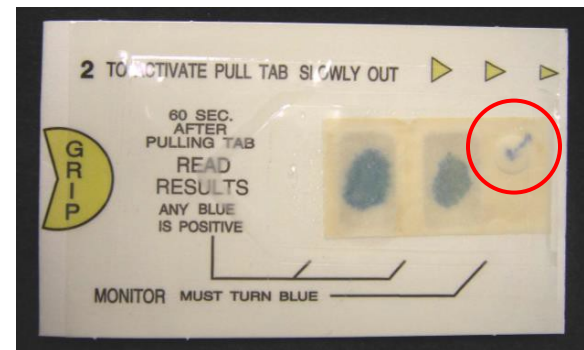
3. Hold card with thumb & index finger at "grip" indicator.
****Place extended middle and ring fingers behind slide for extra support at the back or keep the slide flat on the table while pulling the silver tab.****
 Using other hand, lift silver tab up so the reagent pad is visible.



4. Pull silver tab **SLOWLY** all the way to the right and completely remove it. Developer pad will "flip over" as the tab is pulled.



5. Interpret patient results after 60 seconds, but before 3 minutes (circled area shown above)
Positive = Any shade of blue*
 (* in either or both windows)
Negative = No blue



Internal Controls (circled area shown above):
Positive Control: Appearance of Blue Checkmark
Negative Control: White Background behind Blue Checkmark
 Note: Controls must appear for valid results